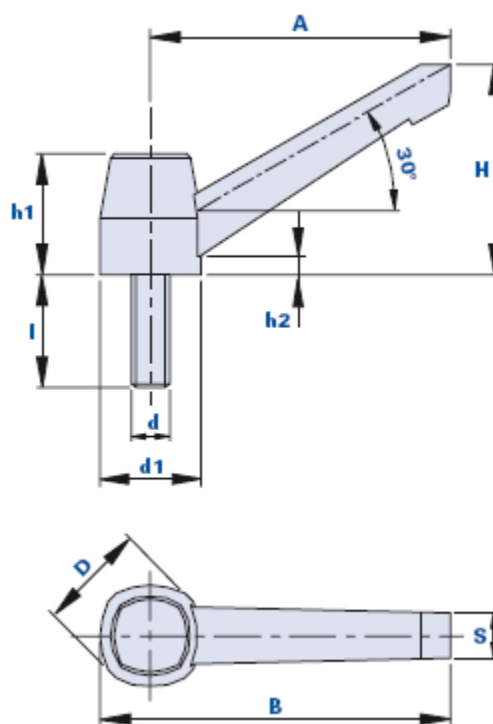


Fixed lever handle with threaded pin



Code	Description	Dimensions								Insert		Weight grams	Stock
		A	B	D	S	H	h1	h2	d1	d	h		
0140CR15	KP-FP 40 M6x15	40	48	18	8,5	32	21	6	16,5	M6	15	12	-
0155DR25	KP-FP 55 M8x25	55	65	22	9	39	23,5	5	20,5	M8	25	30	√
0155DR40	KP-FP 55 M8x40	55	65	22	9	39	23,5	5	20,5	M8	40	40	-
0179ER30	KP-FP 79 M10x30	80	93,5	29	11,5	56	32	5	27	M10	30	70	√
0179ER50	KP-FP 79 M10x50	80	93,5	29	11,5	56	32	5	27	M10	50	79	-
01100FR50	KP-FP 100 M12x50	100	119	38	17	73	44	8	33	M12	50	159	-
01100NR50	KP-FP 100 M14x50	100	119	38	17	73	44	8	33	M14	50	186	-

Lever material

Polyamide-based (PA) technopolymer. Resistant to organic and inorganic chemical substances such as oils, greases, fuels and solvents.

Lever colour

Black with satin finish.

Other colour for suitable quantities.

Stud bolt

Galvanized steel. Special inserts on design and/or in brass/stainless steel on request, for suitable quantities.

Package

10 - 50 - 100 pcs.